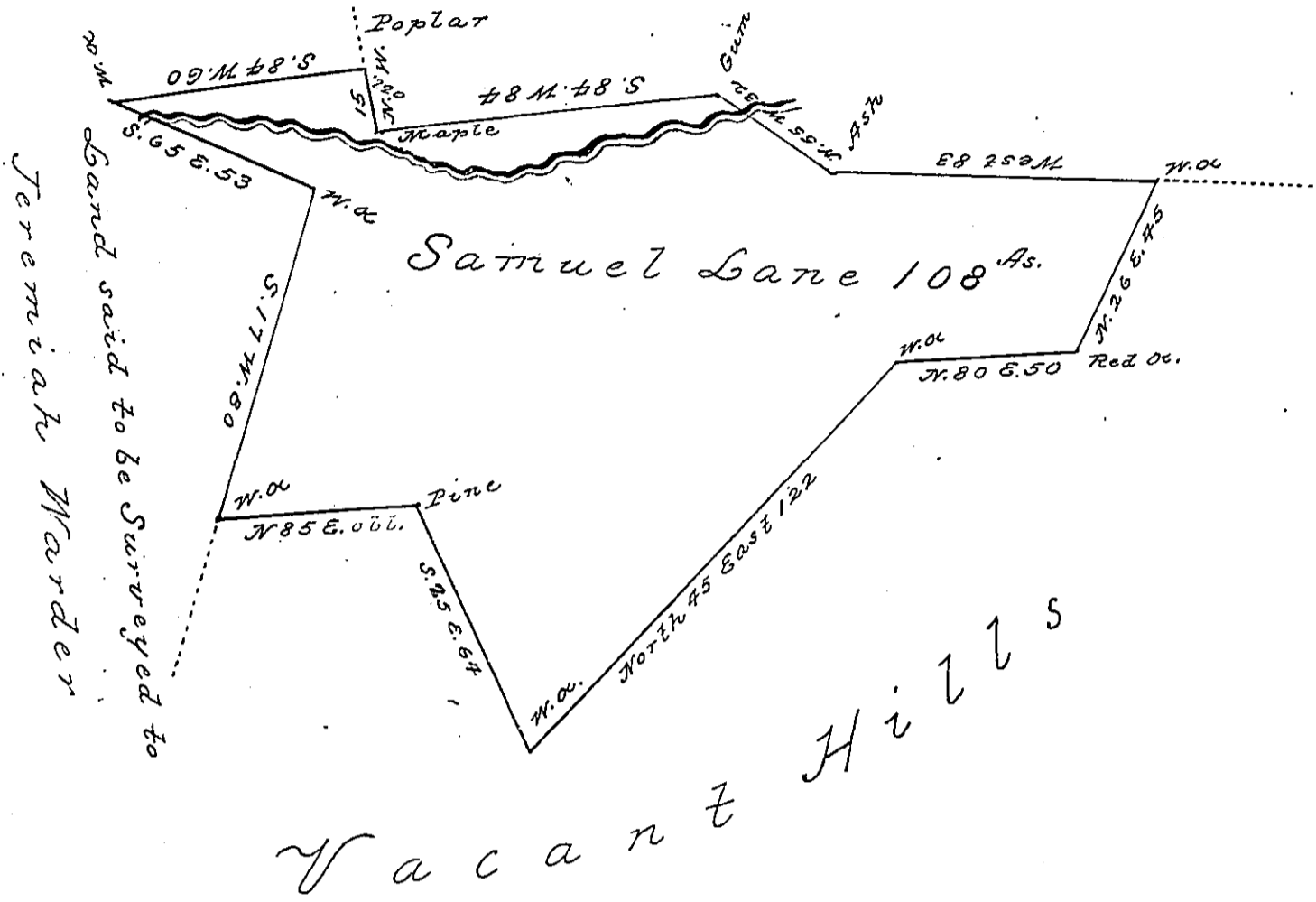


Land said to be Surveyed
to Robert Clugage

Land said to be Surveyed
to Samuel Findley



Situate on Hughwick Creek about a Mile below the Mouth of the Three Locks Creek in Dublin Township formerly in Bedford now in Huntingdon County containing one hundred eight Acres and the usual allowance for Roads, Originally surveyed on the 7th day of August 1777 by Thomas Smith Esquire in pursuance of a Warrant Dated the 17th day of October 1774 whose Draft and Field Notes I have examined and find to be accurate

February 18th 1808

Samuel Cochran Esquire S. S.

John Canaw S. S.

IN TESTIMONY that the above is a copy of the original remaining on file in the Department of Internal Affairs of Pennsylvania, made conformably to an Act of Assembly approved the 16th day of February, 1833. I have hereunto set my Hand and caused the Seal of said Department to be affixed at Harrisburg, this

_____ day of October _____ 1896

James Wyatt
Secretary of Internal Affairs.